
IVAN LAM

Ivan Lam (b1975) has earned a reputation as one of Malaysia's leading contemporary artists for his continuous ability to push the boundaries of his art practice. Unafraid to take risks and never content to lean on the familiar, he is constantly posing himself new challenges through experimentation with techniques and mediums in a bid to take his artworks to the next level. In so doing he has managed to reach greater and greater heights and each of his iconic artworks reflect a rare purity and honesty which are reflective in the works of artists who are answerable only to themselves.

Over the last 15 years he has charted new territory on the contemporary Malaysian art scene with his mastery of printmaking and now his conquering of contemporary painting. He has exhibited widely in the local and international arena and has also garnered multiple awards in a career laden with solo and group exhibitions.

Ivan Lam is an innovator, a fearless explorer and an obsessive perfectionist- all qualities of a great artist in the making.

CHRONOLOGY

2005

18@8 Contemporary Artists from Malaysia and Beyond



Beautiful Mistake
Mixed media on canvas
71cm x 213cm
2005

2006

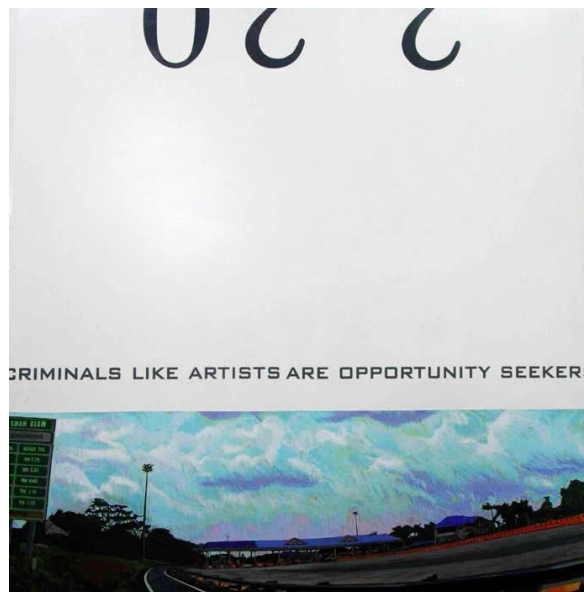
18@8 KUL – KHI



Melatonin
Acrylic on canvas
101 x 213cm
2005

2007

FILTERED



Toil/VSOP
Mixed media on canvas
176cm x 168cm
2007

2007

“Ivan Lam: After all these years.....”



Chinese Man (Always be by my side)

Acrylic on canvas

32" x 102"

2006

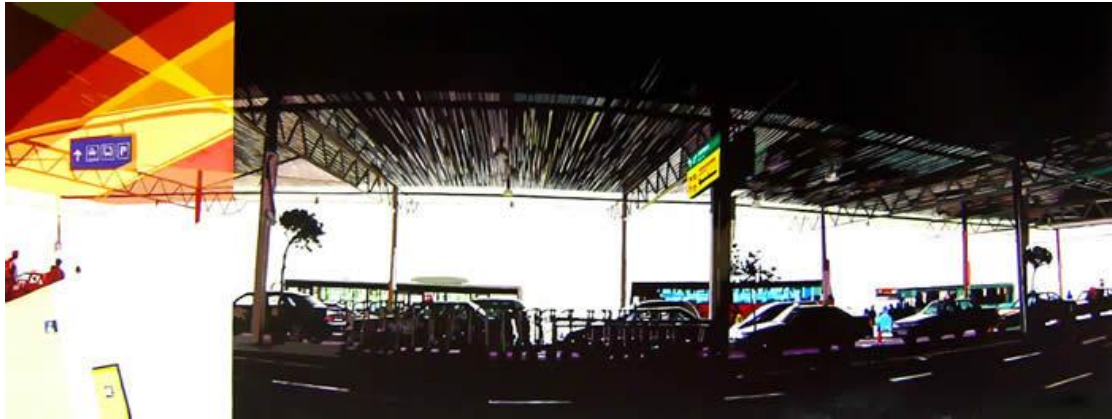


Home (We are finally home)

Acrylic on canvas

48" x 120"

2007



LCC (Never wave goodbye)
Acrylic on canvas
42" x 110"
2006



Russian March (promise me you will hold my hands)
Acrylic on canvas
36" x 96"
2006



Mum & Child (The pain is unbearable but I must go on)
Acrylic on canvas
44' x 110"
2006



Heaven (Heaven can't wait)
Acrylic on canvas
48" x 120"
2007



Surgery (Sorry sir but we did our best)
Acrylic on canvas
82" x 66"
2007



Flower (You never forget my birthdays)
Acrylic on canvas
66" x 60"
2005



Sushi Bar (The place where we first met)
Acrylic on canvas
60" x 66"
2005

2007

18@8 Contemporary Art from Malaysia and Beyond



The first truculent argument between the aloof gaze and the astute disposition/Eiffel

House synthetic polymer paint on canvas

232.5cm x 172.5cm

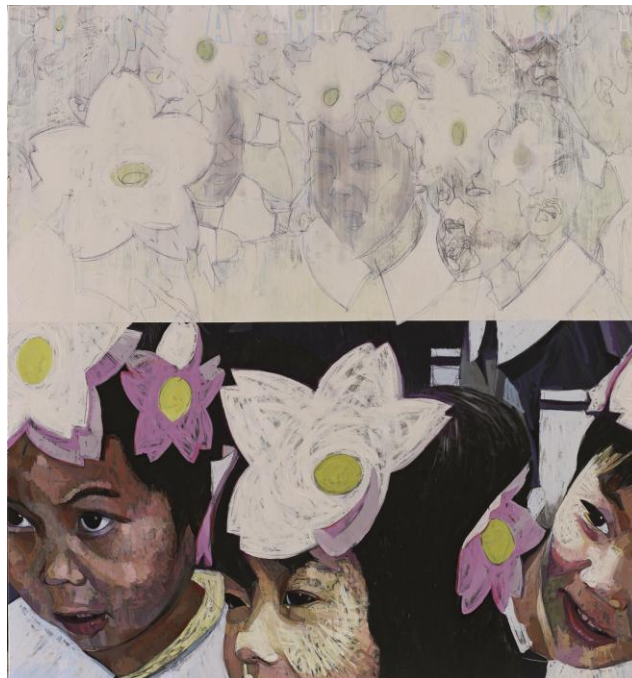
2007

2008

18@8 : VICE & VIRTUE



Gaiking Face Open Version
House Synthetic Polymer Paint on PVC
165cm x 150cm
2008



A Flower For Every Child
House Synthetic Polymer paint on pvc
165cm x 150cm
2008

2009

Panorama



There is no certainty within the wheel of time.
Nippon paint house synthetic paint on canvas
60cm x 240cm
2009



3 buses (I kept my end of the bargain how about you?)
Nippon paint house synthetic paint on canvas
60cm x 240cm
2009



The machine that walks this earth
Nippon paint house synthetic paint on canvas
60cm x 240cm
2009



The urgency of inside looking out
Nippon paint house synthetic paint on canvas
60cm x 240cm
2009



The beginning is the end the end is the beginning
Nippon paint house synthetic paint on canvas
60cm x 240cm
2009



All things fast, past, shiny and glittery is not gold
Nippon paint house synthetic paint on canvas
60cm x 240cm
2009



Waiting for a better future, hoping for a better life
Nippon paint house synthetic paint on canvas
60cm x 240cm
2009



Banana Republic
Nippon paint house synthetic paint on canvas
305cm x 155cm
2009



Animal Stories for my daughter and Michael
Nippon paint house synthetic paint on PVC sheet
162.5cm x 152.4cm
2009

2009

18@8 1 Malaysia : Beyond the Canvas



We Destroy The Ones We Protect The Most
Transparent perspex, fluorescent tubes, die cast metal scaled down cars
45.7cm x 365.8cm
2009

2010

ABSOLUT 18@8



Rainbow
Perspex, resin, fluorescent lights,
18cm x 213.5cm
2010



2011

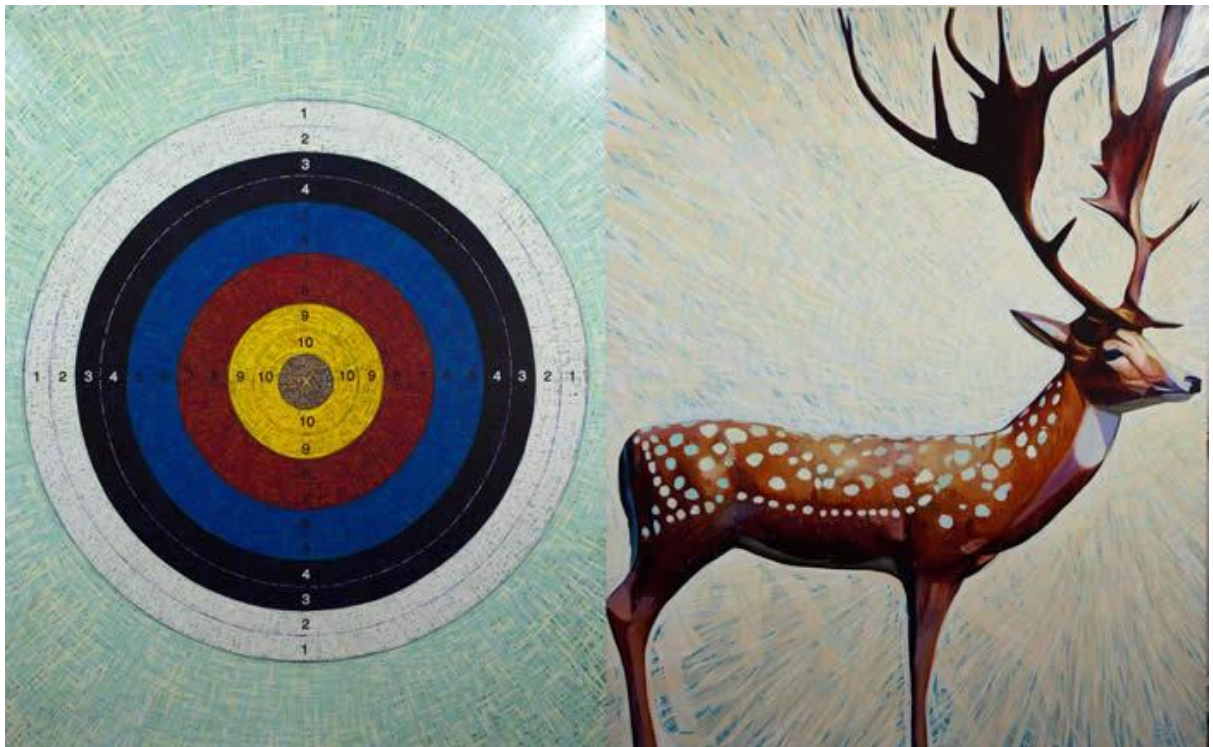
Together Alone



I called but you were engaged
Nippon paint and resin on canvas
2 panels, 198cm x 244cm (each)
2010



For a lark I will eat a crow
Nippon paint and resin on canvas,
2 panels, 198cm x 244cm (each panel)
2010



Target and Deer - You Are Being Missed, Dear
Nippon paint and resin on canvas
2 panels, 198cm x 244cm (each)
2010



Everything I've ever known, I'm giving back to you
Nippon paint and resin on canvas
2 panels, 198cm x 244cm (each)
2010



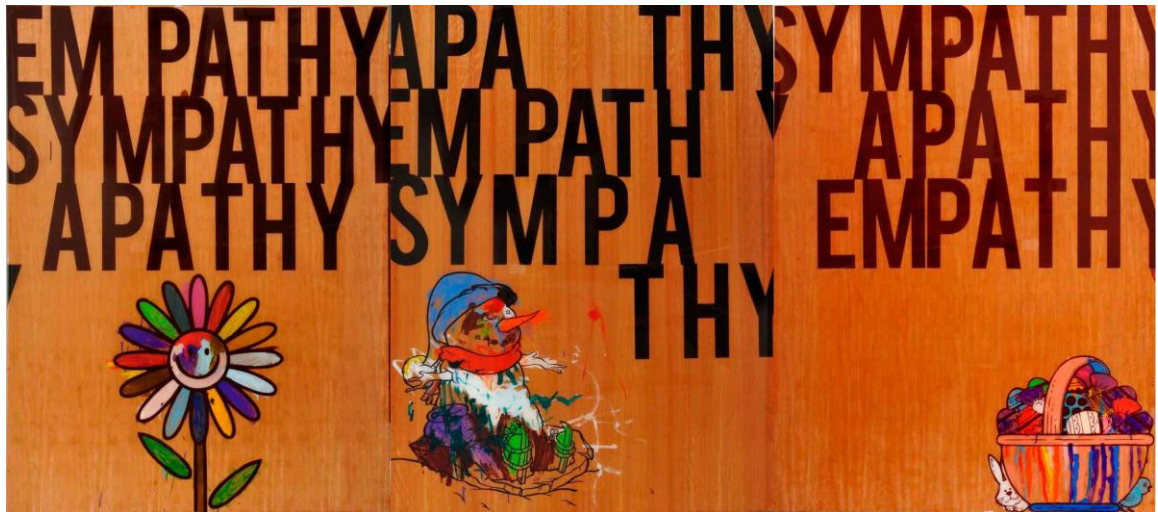
I will sink to the bottom with you
Nippon paint and resin on canvas and board
2panels, 107cm x 335cm
2010



Banana Republic 3
Nippon paint and resin on canvas and board
3 panels, 225cm x 480cm
2011

2011

18@8 SAVE THE PLANET



In memory of the man I was told not to be
House synthetic paint on nyatoh hardwood with resin coating
162.5cm x 122cm
2011



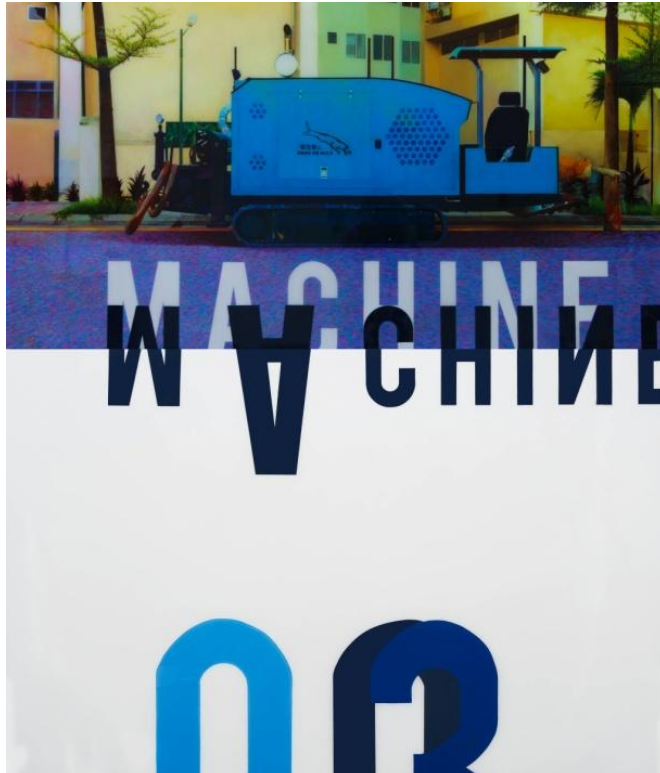
House synthetic paint with resin coating

2012

MACHINES



If the world ends tomorrow (I want to spend it with you)
Synthetic polymer paint and resin on canvas on board
274 x 288cm



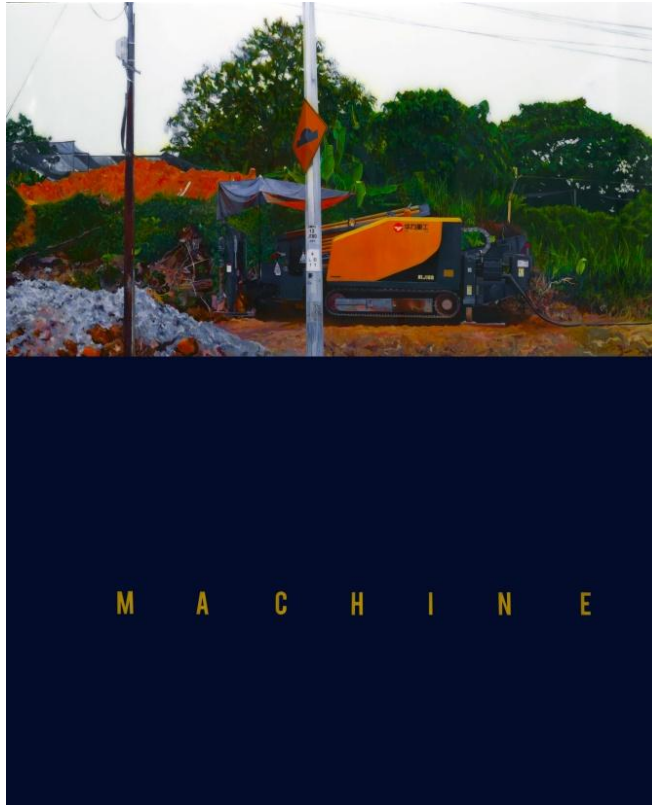
The Blue Machine

Synthetic polymer paint and resin on canvas on board
274 x 288cm
2012



The red and white machine

Synthetic polymer paint and resin on canvas on board
274 x 288cm
2011



The Yellow Machine
Synthetic polymer paint and resin on canvas on board
274 x 228cm
2012

2012

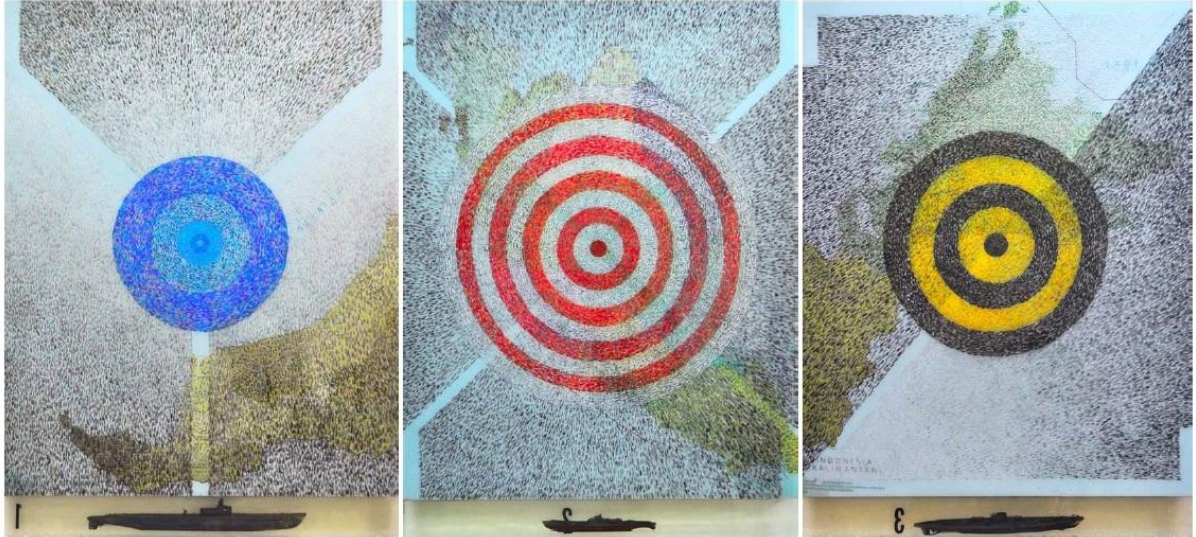
DECADE OF COLLECTING – TIMELESS



A Yellow Diamond
122cm x 76cm – 51cm x 122cm – 148cm x 122cm (Triptych)
Nippon Paint and Resin on Canvas
2012

2012

18@8 KUL-SIN



Y . Z . X

Synthetic house paint on printed paper on board, resin & plastic assembled submarine

64 x 144 x 4 inches per panel

2012