

inland



Annabell Ng | Wei-Ling Gallery

inland

Annabell Ng

19th October - 18th November 2023



Wei-Ling Gallery

Foreword

Wei-Ling Gallery is honoured to present 'Inland' an exhibition by Annabell Ng, whose artistic prowess extends beyond the boundaries of ecological exploration. She delicately weaves her creativity into unconventional materials, coaxing forth their inherent textures and breathing new life into the mundane.

Incorporating a diverse array of materials, Annabell seamlessly bridges the gap between her current creations and those of the past. The inclusion of twigs, barks, and leaves by the artist introduces tactile richness and intricate layers, conjuring a rustic nostalgia that echoes nature's primeval heart. This tactile methodology imbues a dynamic cadence and symbiosis, symbolising life's fundamental interconnectedness. The artist's depiction of pure earthly tones evokes feelings of reverence, as it displays the elusive grace of Mother Nature.

Upon immersing themselves in the artwork, individuals might discover their involvement in the varied roles humanity assumes within our terrestrial sphere. Moving beyond mere passive observation, they emerge as dynamic contributors to life's intricate narrative. The gentlest motions, akin to the butterfly effect, hold the latent power to create ripples across the delicate threads of ecosystems, subtly shifting their balance.

'Inland' celebrates Annabell's innovation and impels us to embrace the role of stewards, tending to the surrounding biodiversity, while bearing in mind that these very elements of nature depicted in these artworks may one day vanish. Our capacity to advocate for policies supporting the coexistence of ecosystems amid industrial complexities underscores our responsibility. Concurrently, the pursuit of knowledge drives us to deepen our connection with the perpetually shifting environment that tirelessly endures for us.

'Inland' challenges the boundaries of a conventional artistic exposition, emerging as a reflective mirror that not only embraces but also safeguards the sanctity of the natural realm—an expedition into the very building blocks of the world's splendour and intricacies.



Resemblance

Glass, paper, mirror, wood, preserved plants

158cm x 244cm x 8cm

2023



Resemblance
Glass, paper, mirror, wood,
preserved plants
158cm x 244cm x 8cm
2023

"Resemblance" encapsulates an enduring exploration of nature, delving into the tangible and intangible legacies of plants and landscapes, which intricately shape our connection to a sense of belonging and self.

This collection is a tapestry of leaves, meticulously gathered from diverse natural landscapes, and the repetitive artistry therein becomes an ongoing conversation with nature, mirroring the vital life force of Earth's ecosystem.

The choice of name cards in this creation bears a profound sense of identity, serving as the initial foundation for "Resemblance." Yet, through the iterative crafting process, the artist unearths the transient nature of identities, echoing the perpetual transformation of the world. Much like the leaves on a tree, every identity shares similarities but never exact replication, illustrating the evolution inherent in the concept of self.



Radiance Persistence
Oil on canvas
46cmx46cm
2023

Close-Up
Radiance Persistence
Oil on canvas
46cmx46cm





Luminance
Carvings on wood, oil paint, plexiglass
114.5cm x 84cm x 4cm (Diptych)
2023

Luminance
Carvings on wood, oil paint, plexiglass
114.5cm x 84cm x 4cm (Diptych)
2023

Photometry is a crucial aspect of Annabell Ng's work environment. The amount of incident light that illuminates the surfaces around her directly influences her perception of consciousness.

The paired windows, which suggest binocular vision and encapsulate the boundaries of consciousness, enable the passage of luminous emissions or luminous presence. The specific frames integrated into each window delineate the gaps in her thought process, shielding them from visible reflections of daylight.





Luminous matter
Dimensions variable
Glass, plexiglass, light bulb, wires, plants
and animals specimen
2023



Luminous matter
Dimensions variable
Glass, plexiglass, light bulb, wires, plants
and animals specimen
2023

Luminous matter
Dimension variable
Glass, plexiglass, light bulb, wires, plants
and animals specimen
2023

'Luminous matter' unveils the dynamic interplay between light and perception. In her work, the delicate beauty of laboratory glassware, microscopic flora, and animal cells is unveiled, emphasizing light's ability to expose intricacies concealed from the naked eye. Through her adept use of specialized lighting and glass sheets adorned with meticulously labeled specimens, she employs light to render these microorganisms and laboratory instruments discernible.

In this context, light assumes the role of a silent mediator, bridging the gap between the concealed world of the microscopic and our human awareness. It is the instrument that grants us access to admire the intricate beauty and complexity of these objects, a realm that would otherwise linger unseen in the shadows. This concept underscores the deeper influence of light on our perceptual faculties and our understanding of the world, particularly in its capacity to unveil the concealed intricacies of the microscopic domain.

Pine wood
separation

Anther
sporogenesis
of Lily



Rhythms
Wood, canvas, wax, oil stick and metal
184cm x 184cm x 5cm
2023

Rhythms

Wood, canvas, wax, oil stick

184cm x 184cm x 5cm

2023

'Rhythms' intertwines gestural mark-making with natural materials, harnessing the raw essence of the natural world to evoke a profound connection to our shared human experiences.

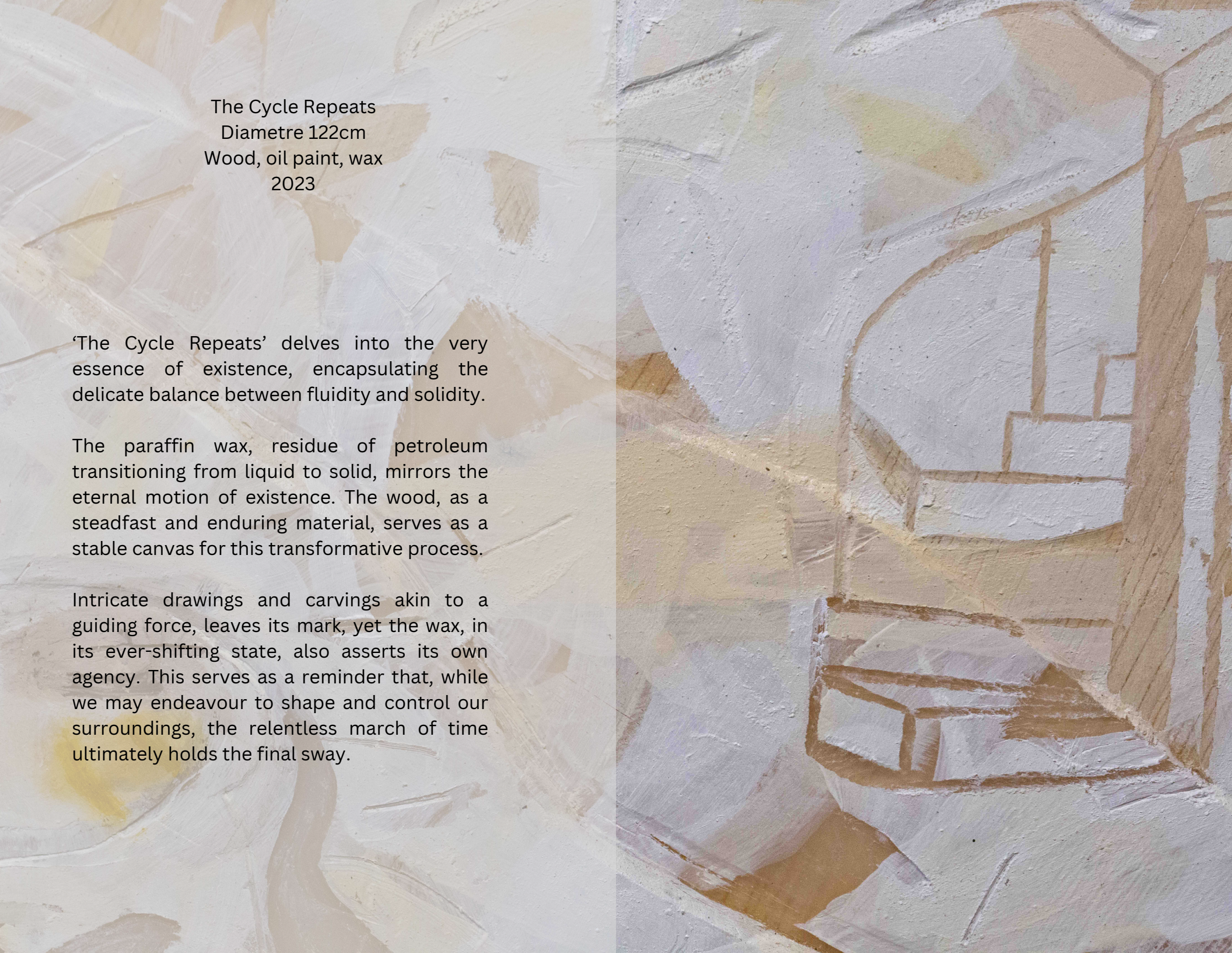
Central to this artwork lies a profound exploration of the intricate interplay between humanity and the natural world, as well as how we position ourselves within the vast tapestry of time and space. In an era marked by the swift decline of biodiversity, the artist's utilisation of natural elements serves as a poignant reminder of the pressing nature of this inquiry.

Through the lens of abstraction, Annabell Ng encourages us to contemplate the inherent dualities that underlie reality, and how our lived experiences are intricately interwoven with the broader natural world. The horizontal division within the landscape-oriented painting stands as a potent metaphor for the dichotomies we must navigate in our daily existence, shaping our perceptions of both ourselves and the world that surrounds us.





The Cycle Repeats
Diametre 122cm
Wood, oil paint, wax
2023



The Cycle Repeats
Diametre 122cm
Wood, oil paint, wax
2023

'The Cycle Repeats' delves into the very essence of existence, encapsulating the delicate balance between fluidity and solidity.

The paraffin wax, residue of petroleum transitioning from liquid to solid, mirrors the eternal motion of existence. The wood, as a steadfast and enduring material, serves as a stable canvas for this transformative process.

Intricate drawings and carvings akin to a guiding force, leaves its mark, yet the wax, in its ever-shifting state, also asserts its own agency. This serves as a reminder that, while we may endeavour to shape and control our surroundings, the relentless march of time ultimately holds the final sway.

Intervals 1
59cmx59cm
Mixed media on paper
2023

‘Intervals’ is a collection of small drawings that investigates the relationship between soundscapes and temporal experiences.

Each drawing features a circular form, representing the binocular nature of human vision, with its size determined by the concentration point of perception. Through the use of subconscious light and sound, the artworks create a sense of progression and momentum, connecting various temporal experiences.





Intervals 1
59cmx59cm
Mixed media on paper
2023



Intervals 2
59cmx59cm
Mixed media on paper
2023



Intervals 3
Mixed media on paper
64cmx64cm
2023



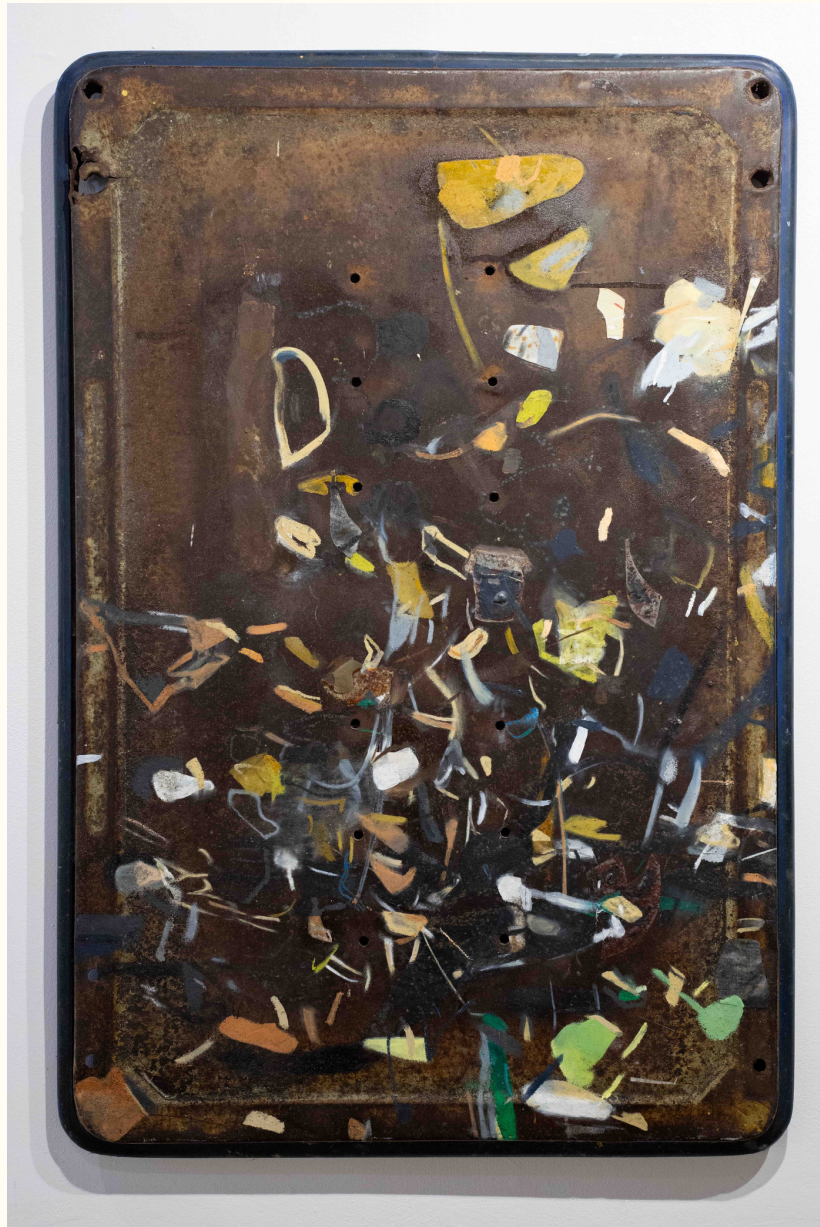
Resilience
148cm x 148 x 5cm
Mixed media on wood
2023



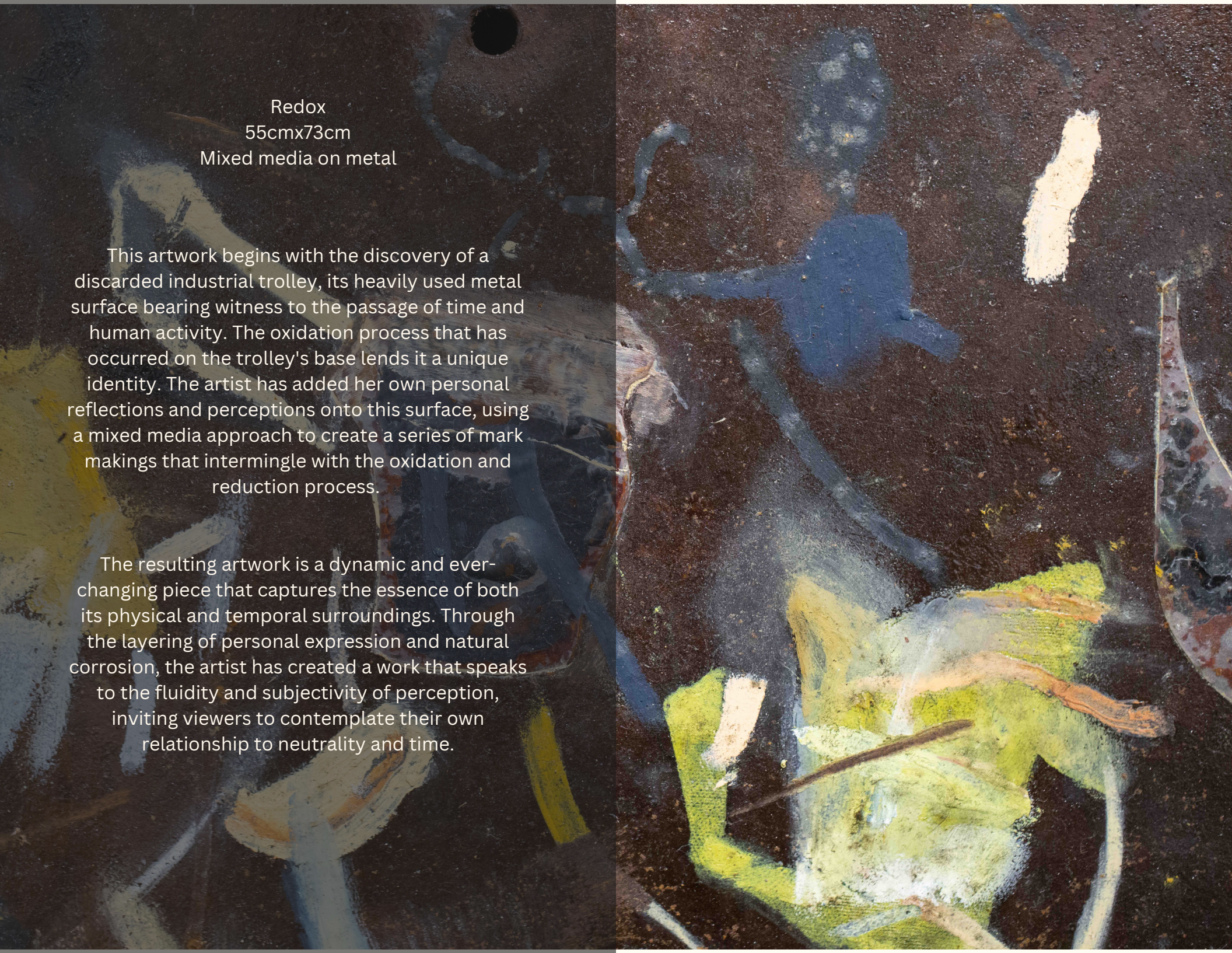
Resilience
148cmx148x5cm
Mixed media on wood
2023

The gradual accumulation of wax layers on the surface carries a nuanced symbolism, subtly alluding to the multifaceted aspects of our environment. From the pristine landscapes to the sombre presence of landfills, this piece delicately weaves a commentary on the impact of human action on the natural world, while also highlighting nature's innate resilience, its ability to adapt and endure in silence.

The flowing line drawings serve as an eloquent expression of thoughts in constant motion, subtly underscoring the importance of adaptability in gracefully surmounting life's myriad challenges.



Redox
55cmx73cm
Mixed media on metal



Redox
55cmx73cm
Mixed media on metal

This artwork begins with the discovery of a discarded industrial trolley, its heavily used metal surface bearing witness to the passage of time and human activity. The oxidation process that has occurred on the trolley's base lends it a unique identity. The artist has added her own personal reflections and perceptions onto this surface, using a mixed media approach to create a series of mark makings that intermingle with the oxidation and reduction process.

The resulting artwork is a dynamic and ever-changing piece that captures the essence of both its physical and temporal surroundings. Through the layering of personal expression and natural corrosion, the artist has created a work that speaks to the fluidity and subjectivity of perception, inviting viewers to contemplate their own relationship to neutrality and time.

Insitu



Insitu



Insitu



Insitu





Connect us through linktr.ee

Produced by Wei-Ling Gallery

To accompany the exhibition 'Inland' from 19th October - 18th November 2023

Wei-Ling Gallery & Wei-Ling Contemporary

No. 8 Jalan Scott, Brickfields
50470 Kuala Lumpur, Malaysia.
T: +603 2260 1106
E: info@weiling-gallery.com
W: www.weiling-gallery.com

PROJECT DIRECTOR | Lim Wei-Ling

DESIGNED BY | Mikhail Vanan

IMAGE COURTESY | Keng Hwa, Annabell Ng & Wei-Ling Gallery

Copyright © 2023 Wei-Ling Gallery

All rights reserved. No part of this publication can be reproduced or transmitted in any form or by any means, electronic or mechanical, including photocopying, recording, or any other information storage and retrieval system without prior in writing from the publisher.