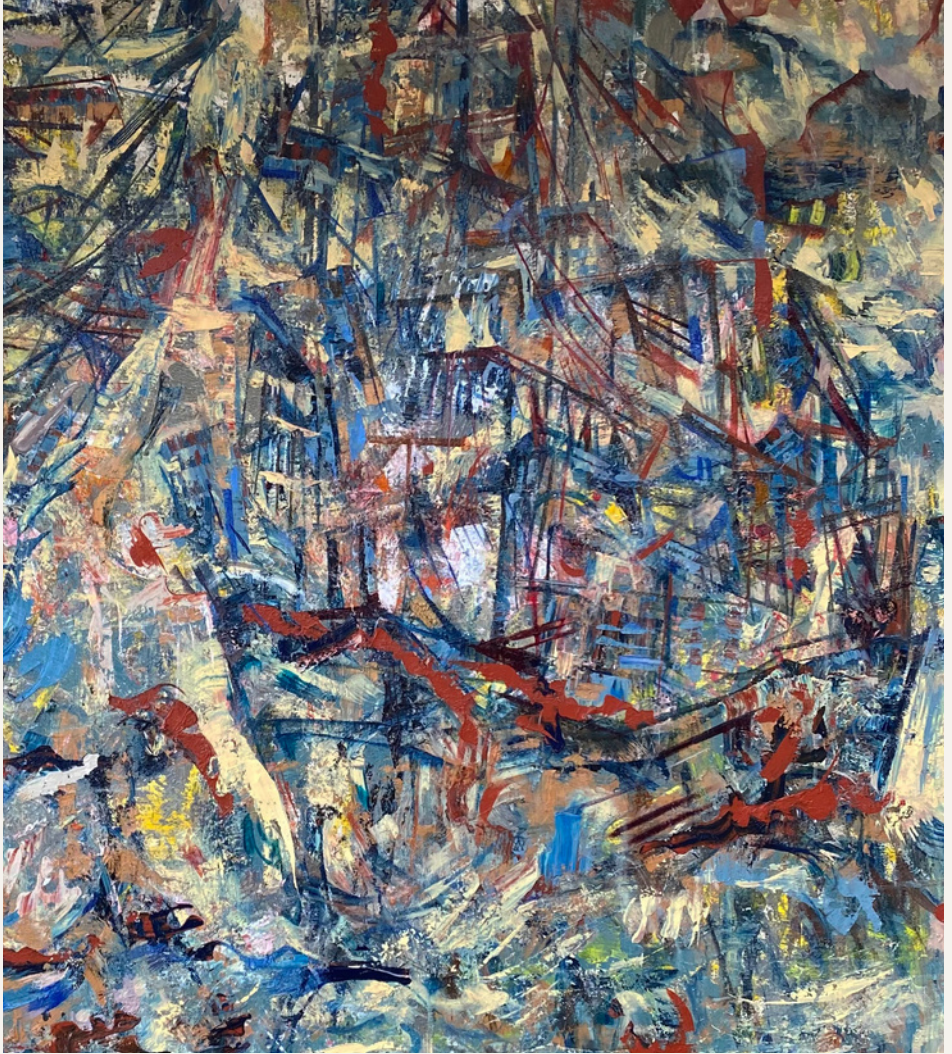


# YAU BEE LING



## REDEFINING RESILIENCE

*Embracing the Battleground  
within and beyond*

# Redefining Resilience

Embracing the Battleground  
within and Beyond

28th November - 30th December 2023

# FOREWORD

Wei-Ling Gallery proudly announces the year-end presentation of 'Redefining Resilience: Embracing the Battleground Within and Beyond' marking the seventh solo exhibition featuring the distinguished Malaysian artist, Yau Bee Ling. This series invites viewers on an introspective visual journey, where the artist intertwines the subtleties of nature with the complexities of one's personal challenges.

Yau Bee Ling's decades-spanning career becomes palpable through her exploration of natural elements, encompassing trees, valleys, caves, stalactites, and canyons. The exhibition comprises six monumental canvas paintings, each symbolising an aspect of her mind's eye, accompanied by a selection of relief and sculptural pieces—a recent exploration and development in her oeuvre. Beyond capturing the inherent beauty of the surroundings, the artist's brushstrokes and compositions also weave a narrative that speaks to her own inner struggles and life experiences.

The central theme of 'Redefining Resilience' is an examination of the ageing process as a source of wisdom and self-discovery. Yau Bee Ling incorporates new ideas into her works by adopting a child-like perspective in her artistic process, allowing her to open up to new perspectives and explore the natural world. This fosters a strong bond between her inner self and the changing external world, revitalising both the artist and the audience.



The exhibition unfolds as a visual and emotional voyage, symbolised by a sailing ship navigating the maritime domain. Wading through the sea waves echoes the adventure of crossing an explorative sea. This imagery encapsulates the emotional uncertainty of life's journey, transforming the battleground and the hostile terrain within and beyond into a canvas or sculpture for exploration.

Yau Bee Ling's personal journey unfolds as a courageous act, confronting a spectrum of contrasting elements—from clarity to fragility, from fleeting moments to powerful materiality. The dynamic visual expression that emerges speaks to the resilience found within the artist herself. This latest collection goes beyond the canvas, showcasing the therapeutic benefits of artistic expression. Yau Bee Ling narrates her story through each piece, encouraging a perception of it as a catalyst for catharsis, personal growth, and contemplation.

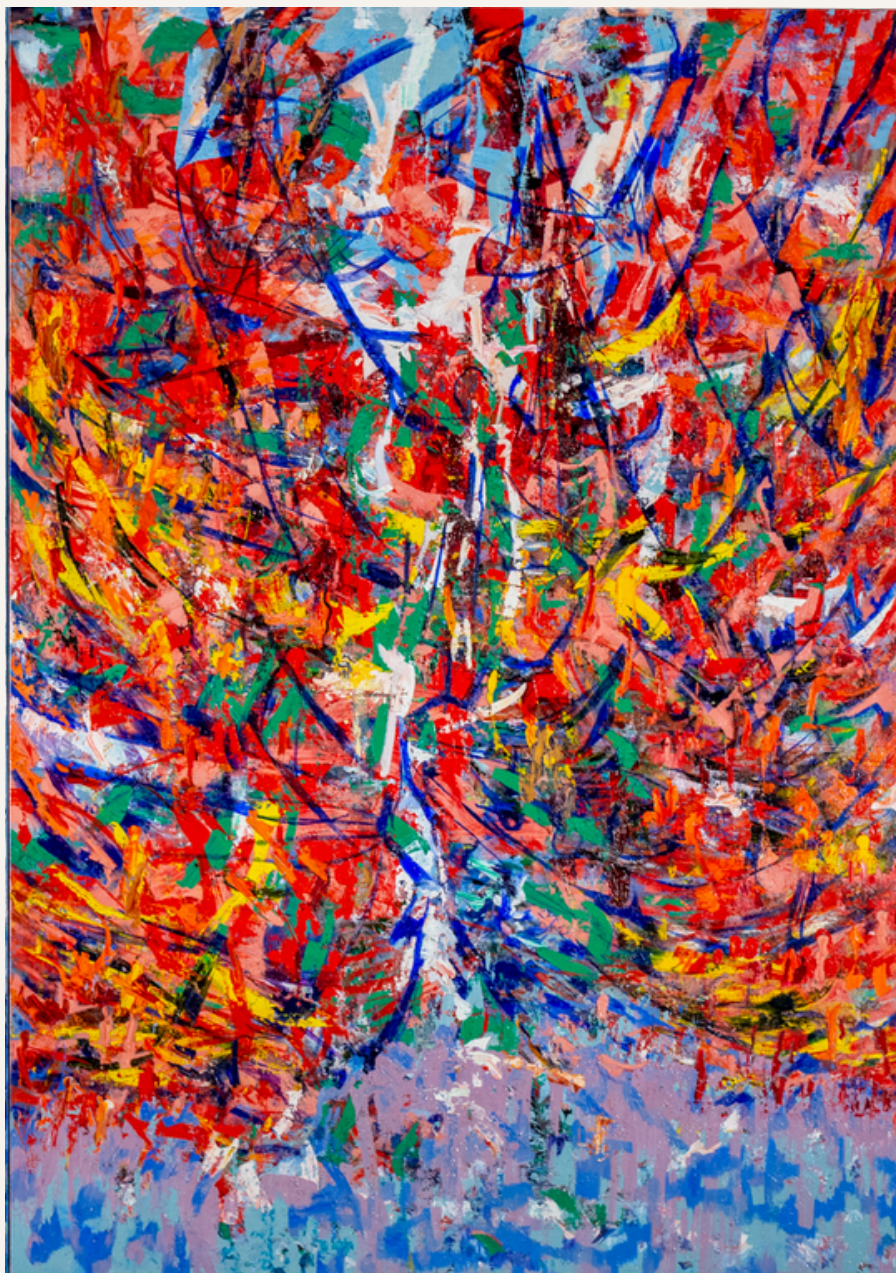




WADE THROUGH THE SEA WAVE  
OIL ON JUTE CANVAS  
213.5CM(H) X 150.5CM (W)  
2023



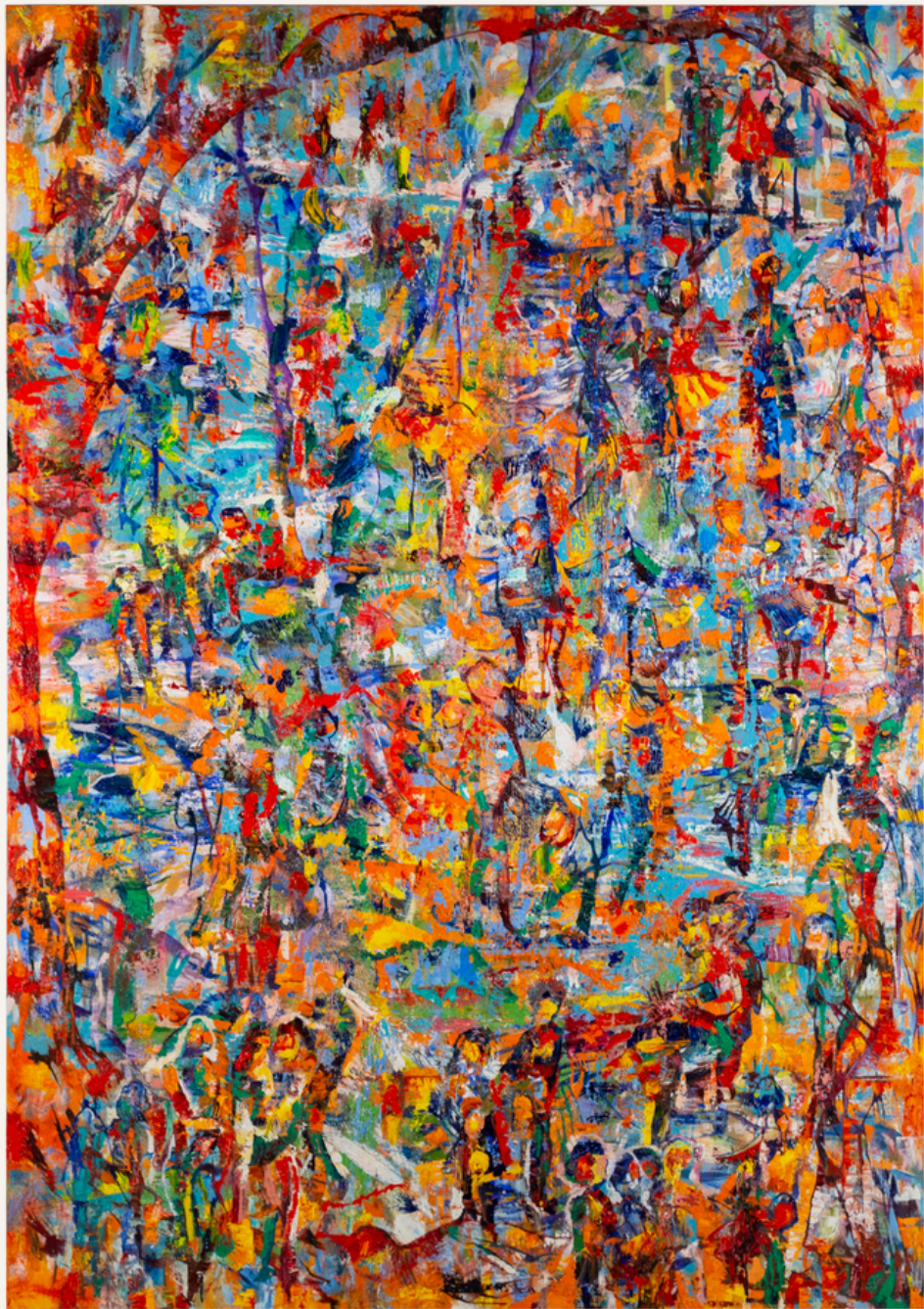
WADE THROUGH THE SEA WAVE  
OIL ON JUTE CANVAS  
213.5CM(H) X 150.5CM (W)  
2023



THE SHIPS THAT PASS IN THE NIGHT  
OIL ON JUTE CANVAS  
213.5CM (H) X 150.5CM (W)  
2023



THE SHIPS THAT PASS IN THE NIGHT  
OIL ON JUTE CANVAS  
213,5CM (H) X 150,5CM (W)  
2023



A CAVERNOUS CITY ON MOTION  
OIL ON JUTE CANVAS  
213.5CM (H) X 150.5CM (W)  
2023





A CAVERNOUS CITY ON MOTION  
OIL ON JUTE CANVAS  
213.5CM (H) X 150.5CM (W)  
2023



BREAKING THE WAVES  
OIL ON JUTE CANVAS  
213.5CM (H) X 150.5CM (W)  
2023



BREAKING THE WAVES  
OIL ON JUTE CANVAS  
213.5CM (H) X 150.5CM (W)  
2023



EPITOME OF YOUTH  
OIL ON JUTE CANVAS  
184.2CM (H) X 200.5CM (W) (HEXAPTYCH)  
30.7CM (H) X 200.5CM (W) (EACH)  
2023



EPITOME OF YOUTH  
OIL ON JUTE CANVAS  
184.2CM (H) X 200.5CM (W) (HEXAPTYCH)  
30.7CM (H) X 200.5CM (W) (EACH)  
2023



SCROLLING ALONG THE PATH OF THE ENORMOUS LANDSCAPE  
OIL ON JUTE CANVAS  
215CM (H) X 148.5CM (W) (PENTAPTYCH)  
43CM (H) X 148.5CM (W) (EACH)  
2023



SCROLLING ALONG THE PATH OF THE ENORMOUS LANDSCAPE  
OIL ON JUTE CANVAS  
215CM (H) X 148.5CM (W) (PENTAPTYCH)  
43CM (H) X 148.5CM (W) (EACH)  
2023



CONQUERING TOGETHER  
MAHOGANY  
35CM (H) X 38CM (W) X 14CM (D)  
2023



CONQUERING TOGETHER  
MAHOGANY  
35CM (H) X 38CM (W) X 14CM (D)  
2023

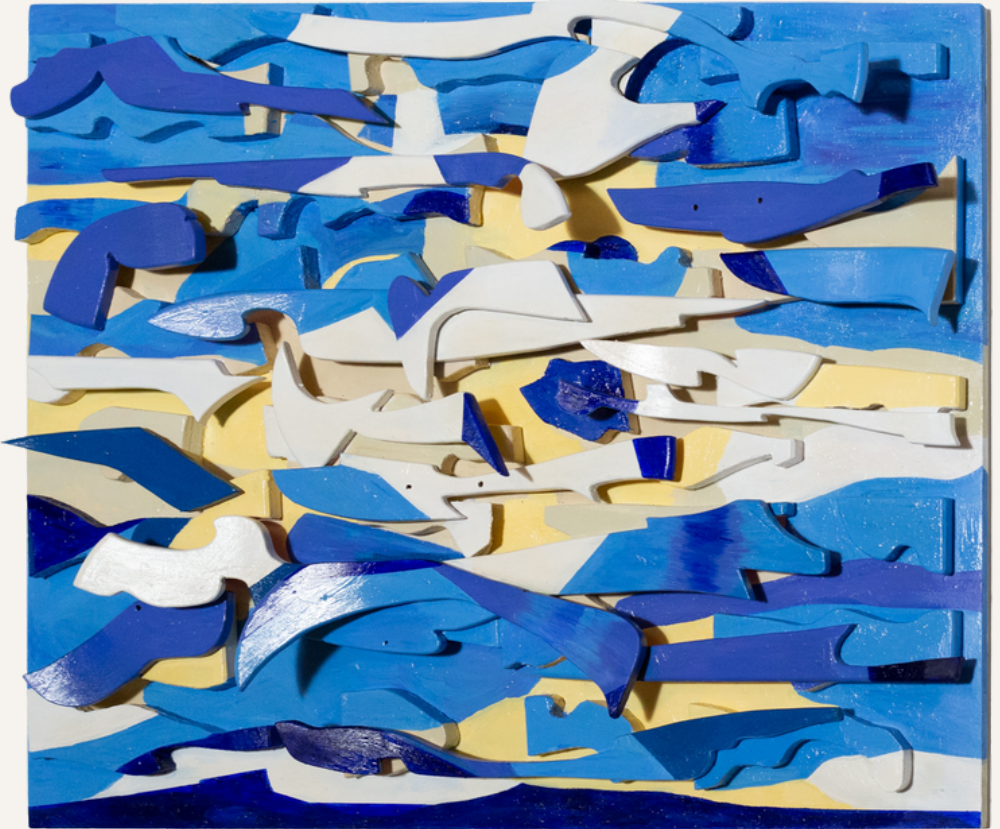




HANGING UP THE SAIL TO ACCOMPANY THE FISHERMEN  
MAHOGANY  
42CM (H) X 30.5CM (W) X 13.5 CM (D)  
2023

HANGING UP THE SAIL TO ACCOMPANY THE FISHERMEN  
MAHOGANY  
42CM (H) X 30.5CM (W) X 13.5 CM (D)  
2023





WADED THROUGH  
OIL ON WOOD  
68CM (H) X 80CM (W) X 8.5CM (D)  
2023

WADED THROUGH  
OIL ON WOOD  
68CM (H) X 80CM (W) X 8.5CM (D)  
2023



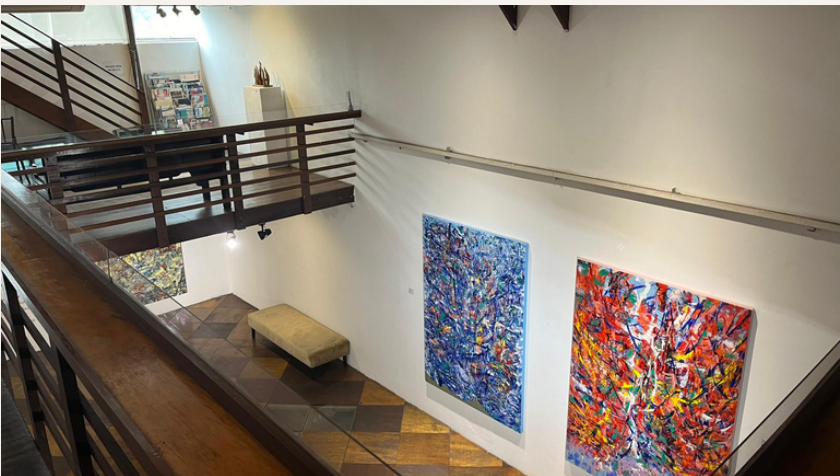


THE UNFOLD (STUDY I)  
OIL ON CUT-OUT WOODEN RELIEF ON PINEWOOD PANEL  
92CM X 122CM  
2023

THE UNFOLD (STUDY I)  
OIL ON CUT-OUT WOODEN RELIEF ON PINEWOOD PANEL  
92CM X 122CM  
2023

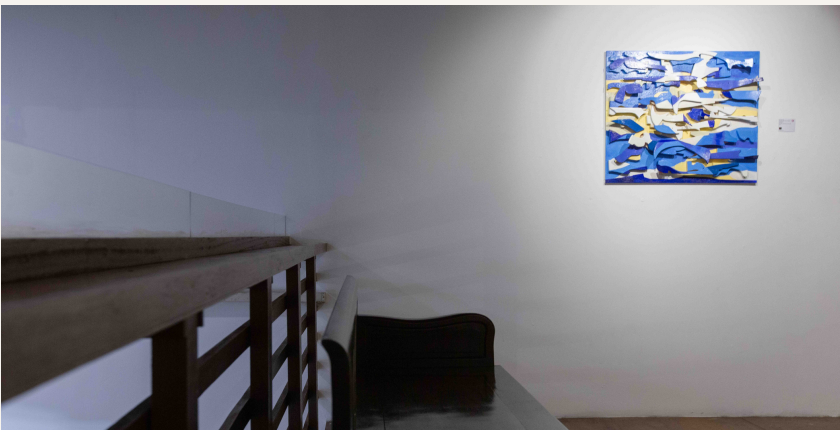


# INSITU





# INSITU





Produced by Wei-Ling Gallery

To accompany the exhibition entitled *'Redefining Resilience: Embracing the Battleground within and Beyond'* from 28th November - 30th December 2023.

Wei-Ling Gallery & Wei-Ling Contemporary

No. 8 Jalan Scott, Brickfields

50470 Kuala Lumpur, Malaysia.

T: +603 2260 1106

E: [info@weiling-gallery.com](mailto:info@weiling-gallery.com)

W: [www.weiling-gallery.com](http://www.weiling-gallery.com)



Connect with us on [linktr.ee](https://linktr.ee)

PROJECT DIRECTOR | Lim Wei-Ling

DESIGNED BY | Mikhail Vanan

IMAGE COURTESY | Wei-Ling Gallery, Phng Keng Hwa & Yau Bee Ling

COVER IMAGE | Breaking the waves (2023)

Copyright © 2023 Wei-Ling Gallery

All rights reserved. No part of this publication can be reproduced or transmitted in any form or by any means, electronic or mechanical, including photocopying, recording, or any other information storage and retrieval system without prior in writing from the publisher.